



Ray Kroc Heritage Society  
*2020 Honorees*





## Ray Kroc Heritage Society

Honoring special donors to  
Ronald McDonald House Charities® Global (RMHC® Global)

The people and companies who join the Ray Kroc Heritage Society partner with RMHC to open doors to improve the health and well-being for children and their families all over the world. These generous donors also continue the legacy of Ray Kroc, founder of McDonald's Corporation and children's advocate in whose memory RMHC was founded. Ray asked all of us to:

- Remain loyal to the children, families and communities where we live and work;
- Invest in effective organizations that hold themselves accountable to the people they serve.



*Dear Ray Kroc Heritage Society Members,*

We are both honored and grateful to be entrusted with leadership of this truly superb organization and want to thank you for all of your support. We look forward to working with our Board of Directors, our senior leadership team and the entire RMHC system to bring to life our vision of a world where all children have access to medical care, and their families are fully supported and actively involved in their children's care.

During our time serving the Charity, we have had the opportunity to witness firsthand the tremendous impact the RMHC system continues to have on families. Even in the midst of a global pandemic, last year, the RMHC system rallied together to not only provide vital support and resources to children and families, but also strategically pivot to temporarily re-purpose RMHC program spaces around the world to support healthcare delivery and provide respite for healthcare workers on the frontline of the pandemic.

Access to healthcare and family-centered care is at the heart of our mission and **because of your support**, we remain strongly positioned to continue to demonstrate how vitally important our programs are to the millions of children and families we serve around the world each year.

On behalf of the millions of families we serve in 62 countries and regions around the world, we express our gratitude for your generosity and investment in our mission.

Ginger Hardage  
Chairman of the Board of Trustees

Kelly Dolan  
President and Chief Executive Officer



*Lisa and Karl Schubert*

Suffering from a rare illness herself, Lisa Schubert and her husband, Karl, feel a personal connection to the families with sick children who turn to RMHC during times of medical crises. That connection, along with a desire to support the future goals of the organization led them to include RMHC in their estate plan.

They know that, as research has shown, families who travel to access medical care for their sick child have greater accommodation needs and financial burdens, and RMHC programs help support a family's ability to stay together and reduce their anxiety.

"We are privileged to be able to give a gift that will alleviate the suffering and stress of childhood illness for families well into the future while ensuring that our giving continues on," explained Lisa. "Gifts to RMHC go a long way in providing hope and peace to families with sick children and we're happy to be able to contribute."

*"Gifts to RMHC go a long way in providing hope and peace to families with sick children and we're happy to be able to contribute."*



*Michael and Michele Thompson*

Michael Thompson and his wife, Michele, were inducted into the Ray Kroc Heritage Society in 2007, but their relationship with RMHC began years earlier. They spent nearly 30 nights at the Ronald McDonald House® in Palo Alto, California when their youngest son was very ill.

"It feels very special to be able to give back to the organization that supported us when our son was sick. They took care of us so that we could focus on him and we are honored to be able to pay it forward to other families in their time of need," said Michael.

Michael recently stepped into a new role as a member of the RMHC Global Board of Trustees and looks forward to being able to offer his time, talent and resources as the organization works to establish itself as an equitable and inclusive organization that attracts, retains, and develops talented, highly skilled, and mission-driven people.

*"It feels very special to be able to give back to the organization that supported us when our son was sick."*



## *Vertex Foundation*

RMHC has a unique role in enabling family-centered care, and in an effort to expand the family-centered care services, the Vertex Foundation made a substantial gift to RMHC.

The Vertex Foundation's gift to RMHC will help to provide family-centered spaces for families so they can be together at a critical time in their lives. The gift will support construction of a Ronald McDonald House at the new children's hospital in Dublin, Ireland and support food, lodging and construction of a new family welcome center for RMHC San Diego.

"We are delighted to support RMHC in the creation of this amazing new facility that will provide the highest level of support to families from across Ireland," said Michael Parini, Chairman of the Vertex Foundation and Executive Vice President and Chief Administrative, Legal and Business Development Officer at Vertex. "It's so important for a child's family to be close by when they are in the hospital, and this donation will help provide that opportunity to parents and families when they need it most."

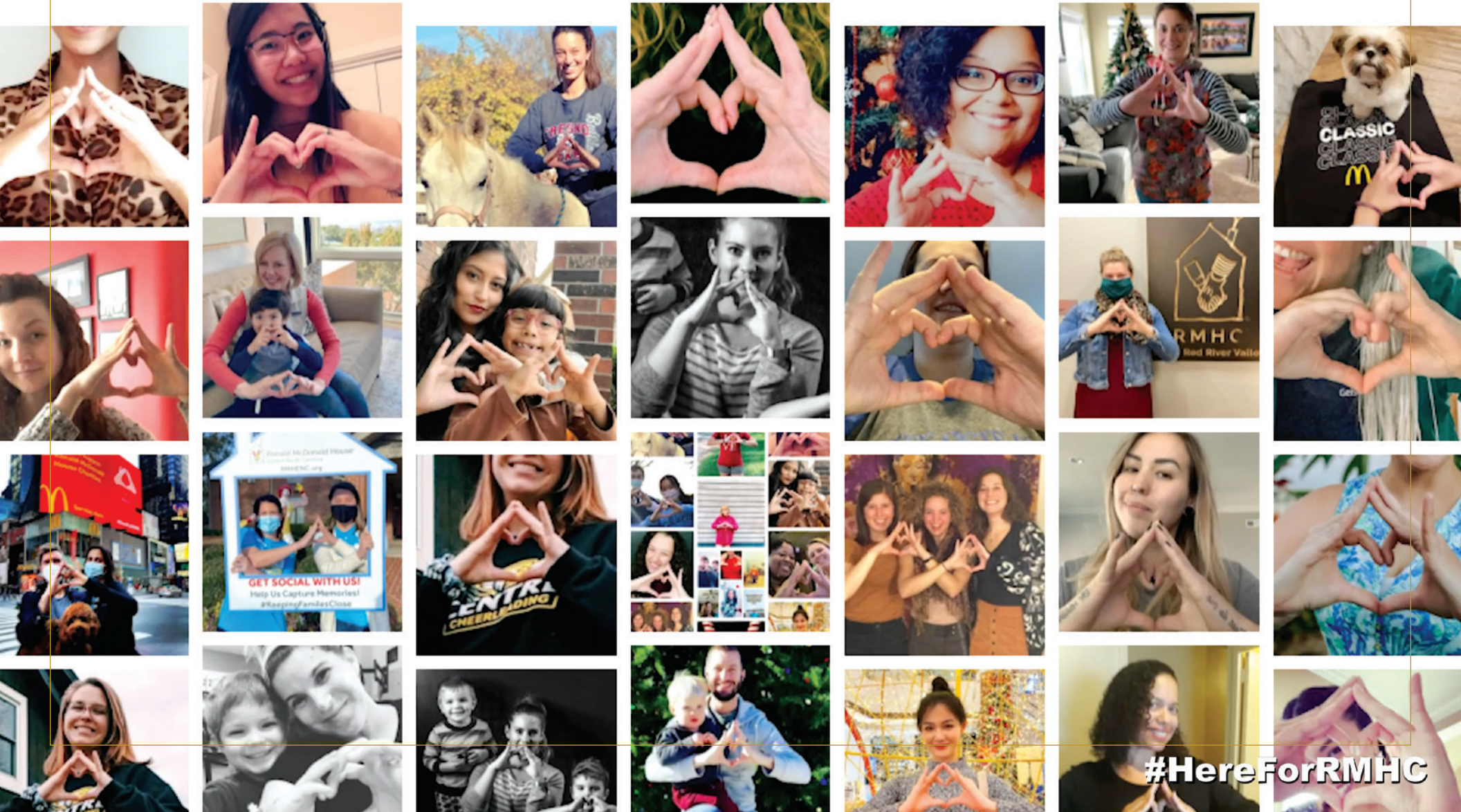
*"It's so important for a child's family to be close by when they are in the hospital, and this donation will help provide that opportunity to parents and families when they need it most."*



Thank you for being  
**#HereForRMHC**



We extend our deepest gratitude to our Founding Mission Partner, McDonald's®. Not only have they helped RMHC positively impact millions of children and their families since 1974, this year, they made a monumental gift of \$20 million as part of a \$100 million commitment over five years. We are eternally grateful for their support in helping to provide stability and vital resources to families around the world.



**#HereForRMHC**

## 2020 Ray Kroc Heritage Society Honorees

### Outright Gifts

---

#### SILVER ARCHES

Dolores and Javier Goizueta and Children\*

#### BRONZE ARCHES

Takashi Cheng  
Jim and Kathleen Skinner\*

### Corporate Gifts

---

#### CORPORATE BENEFACTORS

The Vertex Foundation

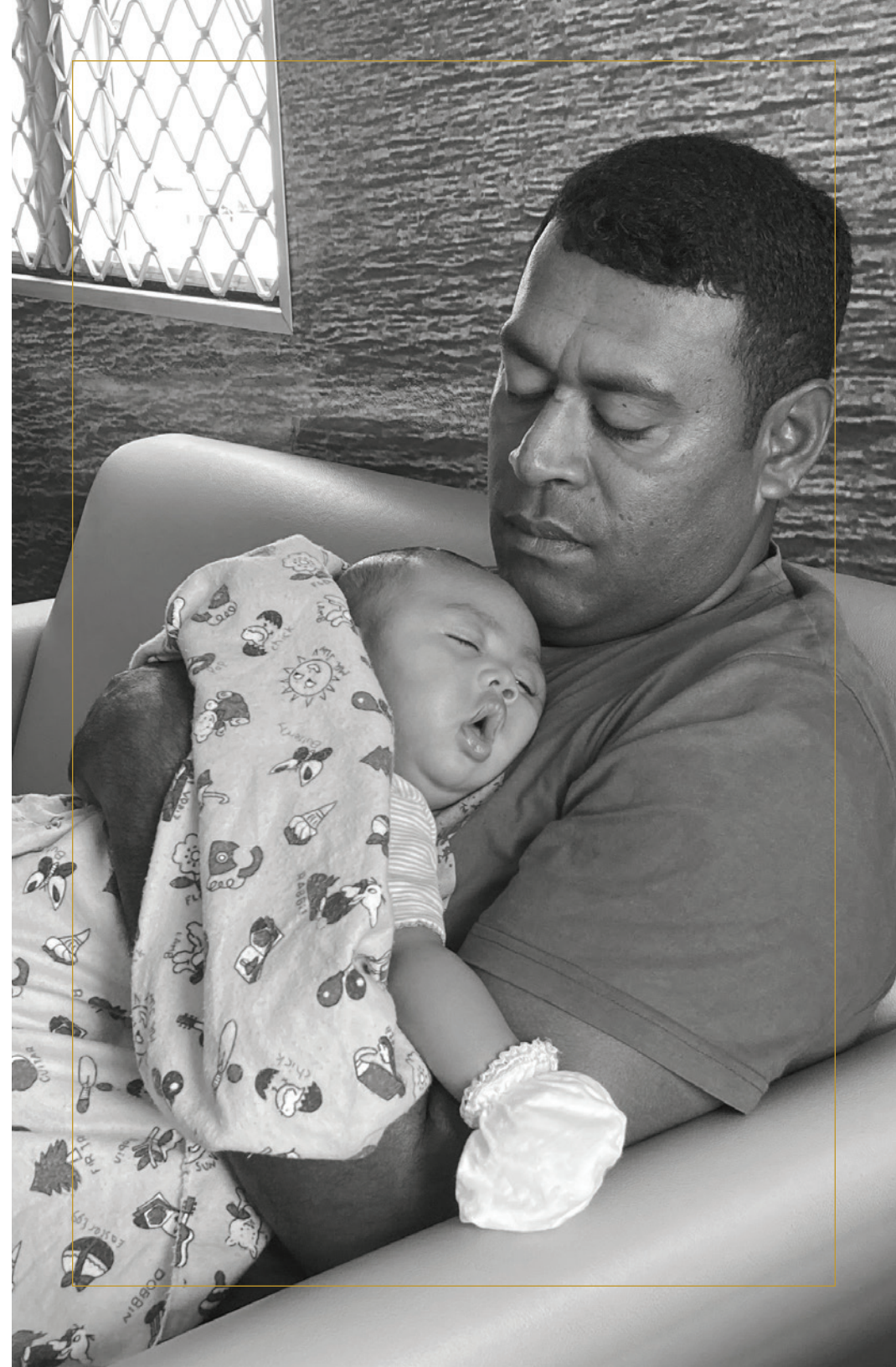
#### CORPORATE DONORS

Chauffeur Driven  
ForTec Medical  
Love Your Melon  
MMC Corp  
NTB and Tire Kingdom Service Centers,  
TBC Corporation Companies  
Nuance  
Persistent Systems, Inc.  
SITE Centers  
Transwestern

#### PRODUCT DONORS & GIFTS IN-KIND

Airbnb  
The Kellogg Company

*\*Elevated Level*





RMHC®

**Keeping families close®**

**RMHC.org**

110 N. Carpenter Street, Chicago, IL 60607

---